

# 2022 ANNUAL REPORT



Alzheimer's®  
SERVICES  
of the Capital Area



Charlie's  
PLACE

BATON ROUGE • GONZALES



## CONTENTS

- 4 President's Message
- 6 Community Impact & Recognition
- 8 Financial Summary
- 10 Why We Donate/Impact of Respite Reimbursement Program
- 12 Walk to Remember
- 14 Donor Recognition

## OUR MISSION...

The mission of Alzheimer's Services of the Capital Area is to teach, care for, & connect with those in our community affected by Alzheimer's disease and other memory-related impairments.





## YOUR LOCAL RESOURCE FOR PROGRAMS, SERVICES & SUPPORT.

Serving Ascension, Assumption, East & West Baton Rouge, East & West Feliciana, Iberville, Livingston, Pointe Coupee, & St. Helena Parishes.

Alzheimer's Services of the Capital Area is not affiliated with any national organization, ensuring that all funds donated stay in the ten-parish service area to fulfill our mission.

### 2022 BOARD OF DIRECTORS

**Richard Bourgeois, *President***

*Malco*

**George Balhoff, *Vice President***

*Postlethwaite & Netterville, Retired*

**Jeff Latino, *Treasurer***

*Hannis T. Bourgeois*

**Catherine Moore, *Secretary***

*Brazeale, Sachse, & Wilson*

**Kevin Brian, *SALA Electric, Inc.***

**Roger Cador, *Community Volunteer***

**Megan D'Aubin, *Faulk & Winkler***

**Carol Fitch, *Office of Homeland Security/FEMA***

**Mandy Garafola, *Horizon Bank***

**John Kovich, *Community Volunteer***

**Mathew Laborde, *Elifin Realty***

**Robert Levy, *Community Volunteer***

**Susan Lipsey, *Community Volunteer***

**Pam Mascari, *Kean Miller, LLP***

**Dr. John McClelland, *Louisiana Cardiology Associates (retired)***

**Jenee Olivier, *Sigma Engineers & Constructors***

**Chase Rainey, *Performance Contractors, Inc.***

**Arthur Scanlan, III, *Community Volunteer***

**Michelle Stevens, *Blue Cross & Blue Shield of Louisiana***

**Charles Valluzzo, *McDonald's Valluzzo Family Restaurants (retired)***

### HONORARY BOARD MEMBERS

**Dudley Coates (*deceased*)**

**Alex Postlethwaite (*deceased*)**

**Ralph Sims (*deceased*)**

### 2022 STAFF

**Barbara W. Auten**

*Executive Director*

**Stephanie Hull Cook**

*Public Relations Coordinator*

**Ellen Dunn**

*Program Director*

**Byron Jolley**

*Bookkeeper*

**Marcia Kirk**

*Baton Rouge Respite Center Assistant*

**Brook Kitto**

*Program Coordinator*

**Debbie Kidder Little**

*Development Director*

**Monique Poreé**

*Office Manager*

**Harriett Pooler**

*Development Officer/  
Volunteer & Walk Coordinator*

**Ann Roeling**

*Training & Marketing Coordinator*

**Dedrick Welch**

*Baton Rouge Respite Center Coordinator*

**Treasure White**

*Respite Director*

**Sonjie Willis**

*Gonzales Respite Center Coordinator*



As I write this message, the pandemic is officially ended, and I am relieved and grateful the organization maintained our services throughout the global conditions and even added a new program to meet the needs of our community. The organization welcomed back in-person programs in our office and Charlie's Place Respite Centers reopened just before the New Year. I am proud to have led the organization that maintained its best-practice model programs and served numbers of the Alzheimer's affected community at nearly or exceeding pre-pandemic rates.

The Board of Directors felt strongly in their approach of employing a full staff to meet the challenges head on and added a part-time staff member for bookkeeping. The organization received the PPP Loan forgiveness and final payments for the Employee Retention Credit as it met all requirements for the federal pandemic funding. Staff members continued in the office full time as normalcy returned. As conditions eased nearly every program saw increases in attendance. The Lunch 'N Learn educational program saw nearly double the attendance for the online program delivery. Lunch 'N Learn remains online and is a pandemic success benefit. A new program, the ADAPT program, was introduced providing education on adaptive techniques in various aspects of caregiving from eating habits to assistive devices and more. The new program saw great success for a first-year launch. Charlie's Place in Baton Rouge added days of service as enrollment increased and is open four days each week while the Gonzales site serves clients three days each week. The two Charlie's Place Centers remain the only social-model respite centers in Louisiana and continue to be best-practice models. Several other programs saw increased attendance. The Education Conference was not held in 2022 but saw great success returning in 2023. Overall, the organization saw its highest service delivery success exceeding the 20% increase goal in services provided prior to the pandemic with nearly 10,000 impactful touches. Impactful touches, those actions that result in an increase in knowledge, resources, or care, are the benchmarks the organization tracks to measure success.

The Memories in the Making fundraising luncheon saw a record success with \$673,200 raised. A Pooled Challenge fund of \$240,000 was raised to meet Rosemary Society pledges inspiring 42 new or renewed Rosemary Society pledges. We are grateful to our Pooled Challenge and Rosemary Society donors as well as all donors who contributed to the campaign. Gifts fund unrestricted operations that allow the organization to deliver all programs and services.

The 2022 Walk to Remember held on the Blue Cross & Blue Shield grounds welcomed Coach Kim Mulkey as Honorary Chair. Coach Mulkey honored long-time Tennessee basketball coach Pat Summit who had early onset Alzheimer's and LSU's Sue Gunter who cared for her mother with the disease. Mulkey shared words of encouragement with the crowd that saw a significantly larger participation as people felt comfortable in crowds once again. We are grateful for all the support from our sponsors, Memory Market participants, Teams and individuals that walked to honor remember a lost loved one.

Because of the tremendous support from the community and sound budgeting the financial sustainability of the organization remained healthy. Grant funding was significantly lower in 2022 as some foundations shifted priorities or met greater needs in the community. We saw an increase in annual gifts reaching nearly pre-pandemic highs while memorial contributions were lower. The Endowment investments in the Baton Rouge Area Foundation saw a \$95,000 loss. We continue to maintain a six-month cash reserve as a best-practice guide

## PRESIDENT'S MESSAGE

for nonprofits. The ratio of expenses saw a change with an increase in both Fundraising and Management & General functional expenses due to the increase in wages in hiring the bookkeeper and accounting software fees as well as the reduced grant funding and IRS changes in audit accounting requirements. The organization's net assets were down by \$196,737 with that being attributed to the loss in the Endowment investments, and significantly less income in grant funding and other income. However, the financial position remains healthy, and we expect to see improvements in 2023.

Again, I wish to express my sincere appreciation to our volunteers, generous donors, our incredibly compassionate staff, and to our dedicated Board of Directors. We mourn the loss of a dedicated Board member, George Balhoff, and appreciate his service to the organization. We look forward to our continued success as Arthur Scanlan became Board President in January 2023. And finally, I wish each of you good health and prosperity as we welcome a brighter future.

*Ricky Bourgeois*

Ricky Bourgeois  
Board President



## IN 2022, ALZHEIMER'S SERVICES...

- Treasure White, MA, PLPC hired in mid-December 2021 assumed the Respite Director position as Charlie's Place reopened.
- The Volunteer Appreciation function was not held due to the number of COVID cases remaining high. Volunteers were invited to drive by the office to receive a thank you gift (insulated tumbler and coffee gift card) and personal thanks from the staff.
- The general donation platform transitioned from Commit Change to Classy.
- Ellen Dunn, LMSW, was promoted to the Program Director position and Brook Kitto, BA, came on board as a new Program Coordinator in April; both have several years in elder care experience.
- Charlie's Place in Baton Rouge celebrated its 15th Anniversary while Charlie's Place in Gonzales celebrated its 5th Year Anniversary.
- In May, the TLC (Tender Loving Care) program began traditional in-person socials held quarterly with different themes.
- In February, Charlie's Place added a second day each week as the enrollment grew. A third day was added in April in response to the growing need. Both sites added days as enrollment grew.
- The Alzheimer's Book Club returned to the office in 2021, offering a hybrid format to attendees and continued to show an increase in attendance in 2022. Participants choose an Alzheimer's related book to read and discuss.
- Several grants were received providing funding for TLC's, Charlie's Place, Respite Reimbursement, general operations, and programs in general.
- More Alzheimer's Support groups began to meet in person again, while some continued to meet virtually. The Gonzales Support Group was restarted at a new location and a new group began in Denham Springs.
- Alzheimer's Services dedicated the building as The Valluzzo Center in honor of Charles L. Valluzzo, a long-time committed donor and board member who has championed the cause to ensure the Alzheimer's affected community in the Greater Baton Rouge Area has a dedicated resource for family and caregiver support.
- Alzheimer's Services was invited to serve on the Louisiana Department of Health's Well Ahead Initiative as a Coalition member. Executive Director Barbara Auten and Program Coordinator/Trainer Ann Roeling served on the Ready Workplace and Education committees respectively.
- The Memories in the Making fundraiser was held at the Renaissance Hotel raising a record \$673,000 with \$265,000 in a Pooled Challenge Fund inspiring 42 new and renewed Rosemary Society pledges.
- The Walk fundraising platform changed from Team Raiser to Classy, a more user-friendly platform.
- The Adapt Series launched in June on The Longest Day, June 21. Two subsequent sessions were held at times significant to Alzheimer's disease – Sept. 21, World Alzheimer's Day and in November in conjunction with the national Alzheimer's Awareness Month.
- Volunteers were invited to return to Charlie's Place in August to enhance our program. Volunteers included musicians, pet therapy, entertainment, and dramatics.
- Kim Mulkey, LSU Women's Basketball Head Coach served as Honorary Chair of the 2022 Walk to Remember. Registrations for the 2022 Walk to Remember tripled from 2021 with 1264 participants and 94 teams raising \$293,112.
- Staff members participated in two team building workshops led by Emergent Method, building workplace relationships as staff all returned to the office full-time.
- As the pandemic eased and program offerings were once again open to in-person delivery advertising increased across all platforms.
- Ellen Dunn, BSW and Treasure White, PLPC, attended the American Society on Aging conference held in New

## COMMUNITY IMPACT & RECOGNITION

Orleans in April.

- Treasure White, PLPC, was selected by the Ascension Chamber to participate in the Leadership Ascension program.
- Executive Director, Barbara Auten received the Girl Scouts of Louisiana South Women of Distinction Award in September. Auten is a life-member of Girl Scouts and served as a Troop Leader for 24 years as well as several volunteer leadership positions.
- The Arts and Alzheimer's program was retooled and resumed in August with a watercolor workshop. Subsequent sessions included movie viewing and singing Christmas carols with Kay White.
- Several activities were held during Alzheimer's Awareness Month including an activity workshop for activity professionals and caregivers, memory screenings throughout all 10 parishes, three Making Sense of Cents-Financial Literacy for Alzheimer's workshops, and the popular Fall Festival.
- Third Party Fundraisers from 36 donor organizations contributed over \$22,000 towards various programs and services.



Statement of Activities  
Year Ended December 31, 2022

**SUPPORT & REVENUE**

Contributions	\$ 880,696
Respite center fees	97,990
Grants	80,553
Contributed goods & services	91,135
Investment return, net	(95,056)
Other income	150,969
	<u>1,206,287</u>
<b>TOTAL REVENUE</b>	<b><u>1,206,287</u></b>

**EXPENSES (INCLUDES DONATED GOODS & SERVICES)**

Program Services	967,493
Management & General	211,903
Fundraising	223,628
<b>TOTAL EXPENSES</b>	<b><u>1,403,024</u></b>
 CHANGE IN NET ASSETS	 (196,737)
 NET ASSETS, Beginning of Year	 <u>3,691,122</u>
 NET ASSETS, End of Year	 <u><u>\$3,494,385</u></u>

## 2022 Expenses By Category

Programs & Services

Expenses 69%

In Kind 1%

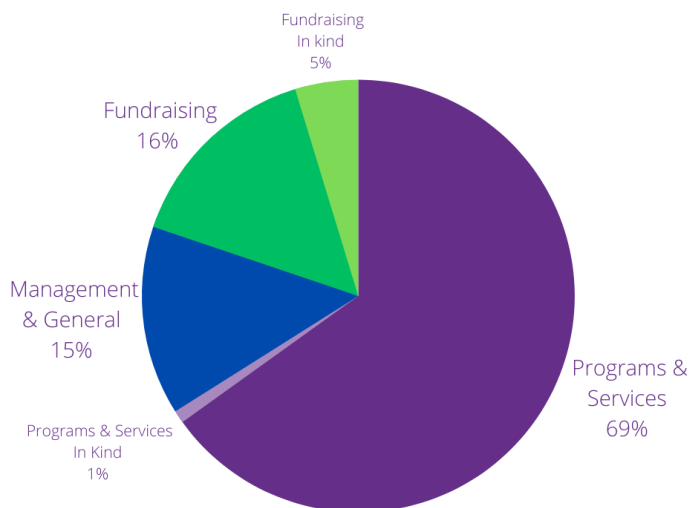
Management & General\*

Expenses 15%

Fundraising

Expenses 16%

In Kind 5%



\*Adoption of new accounting software and hiring of a bookkeeper increased the percentage of expenses for Management & General expenses.



Statements of Financial Position  
December 31, 2022 & 2023

	2022	2021
<b>ASSETS</b>		
<b>CURRENT ASSETS</b>		
Cash	\$757,155	\$561,142
Certificates of deposit	301,414	428,006
Accounts & other receivables	18,959	268,440
Unconditional promises to give (net of discount & allowance for uncollectible accounts)	308,130	275,092
Prepaid expenses	32,688	18,619
TOTAL CURRENT ASSETS	<u>1,418,326</u>	<u>1,551,299</u>
<b>PROPERTY &amp; EQUIPMENT</b>		
Operating lease right-to-use asset, net of amortization	40,336	-
Property & equipment, net of depreciation	<u>781,747</u>	<u>802,863</u>
	<u>822,083</u>	<u>802,863</u>
<b>OTHER ASSETS</b>		
Investments - endowment	924,340	1,023,711
Certificates of deposit - endowment	39,000	39,000
Unconditional promises to give (net of discount & allowance for uncollectible accounts)	<u>392,716</u>	<u>486,290</u>
TOTAL ASSETS	<u>\$3,596,465</u>	<u>\$3,903,163</u>
<b>LIABILITIES &amp; NET ASSETS</b>		
<b>CURRENT LIABILITIES</b>		
Accounts & other payables	\$ 28,302	\$ 26,082
Accrued salaries	14,159	13,054
Accrued compensated absences	19,283	21,573
Other accrued expenses	-	9,140
Note payable - Paycheck Protection Program	-	142,192
Operating lease liability	<u>34,544</u>	-
TOTAL LIABILITIES	<u>96,288</u>	<u>212,041</u>
<b>LONG-TERM LIABILITIES</b>		
Operating lease liability, less current portion	<u>5,792</u>	-
<b>NET ASSETS</b>		
Without donor restrictions	3,115,623	3,267,577
With donor restrictions	<u>378,762</u>	<u>423,545</u>
Total net assets	<u>3,494,385</u>	<u>3,691,122</u>
TOTAL LIABILITIES & NET ASSETS	<u>\$3,596,465</u>	<u>\$3,903,163</u>

## WHY WE DONATE TO ALZHEIMER'S SERVICES

*People caring for someone with dementia need a lot of help. Alzheimer's Services was an invaluable resource when I was a caregiver for my wife. Now it's time to pay it forward by investing my time and money to support this organization.*

*John Kovich/Former Caregiver, Board Member, Rosemary Society Member, Support Group Facilitator, & Education Committee Member*



*Becoming a Rosemary Society Member is near and dear to my heart. While not in a position to use Charlie's Place personally, thanks to an invite by George Balhoff and a Volunteer Day sponsored by my employer P&N, I was grateful for the opportunity to volunteer and experience first-hand the dedicated care of the staff. With both parents diagnosed with Alzheimer's within 3 months of each other, I know the PRICELESS value of respite for the caregiver... and the importance of Alzheimer's Services being a tremendous resource to answer questions and make support materials, programs, and education available for loved ones of those with Alzheimer's /Dementia.*

*Mom and Dad, I'll remember for you!*

*Kim Chauvin/Volunteer, Walk Team Captain, & Rosemary Society Member*

*Alzheimer's and dementia are hopeless diseases for those affected and their caregivers. Alzheimer's Services is the only organization in our region solely focused on supporting families living through with this diagnosis. From the guidance, education, respite, and community offered by Alzheimer's Services, this organization is the only ray of hope in what can feel like a hopeless situation.*

*I've been both volunteering and donating to Alzheimer's Services for over 10 years now. Seeing up close and personal, the difference this organization's staff members make in so many lives, in such a consistent way over the years, has made me very proud to be involved and incredibly honored to serve as a board member.*

*Mathew LaBorde/Board Member, Rosemary Society Member, Walk Committee Chair, & Public Relations Committee Member*



## IMPACT OF RESPITE REIMBURSEMENT PROGRAM

The respite reimbursement program provided by Alzheimer's Services grants \$600/year to eligible caregivers to provide care for their loved one while they receive a break to run errands or rest & recharge. Caregivers had this to say regarding the respite reimbursement funds:

*Thank you for all the wonderful resources you offer. How fortunate we are to have such an outstanding organization...led by such a talented and caring staff...*

*A. K.*

*In today' challenging economy having the respite reimbursement program helps to alleviate some of the costs and helps to reduce some of the stress that is put on me as my mother's primary caregiver...*

*Angela P.*

*After receiving respite reimbursement funds, a caregiver remarked, "this check means I can keep Mom at home with me for another month."*

*A Caregiver*

*"It's so nice to come to a place (CP) where you are not judged. We all have memory problems, but that doesn't matter. There's no stigma there. This has just been the best day!"*

*A former CP client*

*Charlie's Place honestly has been a lifesaver – just getting that break a few times a week, it's amazing."*

*Two sister caregivers*

# Alzheimer's SERVICES of the Capital Area

# WALK TO REMEMBER

- Honorary Chair - Kim Mulkey, LSU Women's Basketball Head Coach
- Walker registrations tripled from 2021 with 1264 walkers registered.
- 94 teams participated

## OCTOBER 15, 2022

TOTAL RAISED .....\$293,112  
 TOTAL SPONSORSHIPS..... \$223,660  
 CORPORATE SPONSORSHIPS..... \$101,000  
 WALK SPONSORSHIPS..... \$122,660  
 INDIVIDUAL/TEAM FUNDRAISING..... ..\$69,452

*\*Totals are as reported on the Walk to Remember website.*



## WALK TO REMEMBER TEAMS

#EXCHANGECLUBSTRONG!  
 ALLEY-OOPING ON ALZHEIMER'S  
 ALZHEIMER'S SERVICES OF THE  
 CAPITAL AREA  
 AMAZING GRACE  
 APPLE GUERIN  
 BATON ROUGE GENERAL BHU  
 BIG BAD BOURGEOIS  
 BYRON'S BUNCH  
 CALLA LILLIES  
 CARLINE MANAGEMENT COMPANY  
 CAT WALK  
 CHATEAU D'VILLE REHAB &  
 RETIREMENT  
 CHRIS ELLIOTT'S TWISTED BLISTERS  
 CHURCH FUNERAL SERVICES  
 CLAIBORNE SENIOR LIVING  
 CLASSY BUT SASSY  
 COMPASSUS BATON ROUGE  
 CONDUENT FORGET ME NOTS  
 DH  
 DIGNITY 2ND LINERS  
 DONNA'S GUARDIAN ANGELS  
 DOROTHY'S BABIES  
 DW MEMORIES  
 EFCU FINANCIAL  
 FACIANES FIGHTERS  
 GEAX PURPLE  
 GOEA STEPPERS  
 GRANNY B'S BUNCH  
 GRIFFON GUYS N GALS  
 GRISWOLD HOME CARE: LET'S  
 GLEAUX  
 HAMILTON RELAY  
 HOME INSTEAD

HOSPICE SPECIALIST OF LOUISIANA  
 INVESTAR  
 JESSIE'S BELLS  
 JP & LAMAR  
 LAMAR  
 LIFE SOURCE SERVICES  
 LIPSEY'S GUNRUNNERS  
 LULA "BIG MA" TERRANCE  
 MAIN STREET PILOT CLUB OF PILOT  
 CLUB INTERNATIONAL  
 MALHIET  
 MELARA ENTERPRISES  
 METHANEX REMEMBERS  
 NANNY'S TEAM  
 NEW CENTURY HOSPICE  
 OAKWOOD VILLAGE ASSISTED LIVING  
 OLLI AT LSU  
 OLLIE STEELE & ST. CLARE  
 OMI'S ANGELS  
 PAPPYS KREWE  
 PMC  
 POP POP'S PARTY  
 PSI PHI CHAPTER OF CHI ETA PHI  
 SORORITY INC.  
 RACE FOR ACE  
 RAMBLING OLDIES OF DENHAM  
 SPRINGS  
 RAYMOND JAMES RED HOT CHILI  
 STEPPERS  
 REFUSE TO LOSE  
 ROSE'S PETALS  
 ROTARY CLUB OF PLAQUEMINE  
 SIGMA THETA TAU (TAU PI CHAPTER/  
 SUBR)  
 ST. JAMES EPISCOPAL CHURCH

ST. JAMES PLACE  
 ST. JOSEPH BAPTIST CHURCH  
 OUTREACH  
 SUCCENTRIX BUSINESS ADVISORS  
 SUNRISE STRUTTERS  
 TEAM AIPD  
 TEAM ANNETTE!!!  
 TEAM CHAPMAN  
 TEAM GARDEN VIEW  
 TEAM JANICE  
 TEAM KIT  
 TEAM LDH  
 TEAM MARIE  
 TEAM MIKE "MAGNUM"  
 TEAM P&N  
 TEAM PERFORMANCE CONTRACTORS  
 INC.  
 TEAM PODO  
 TEAM STEVENS  
 TEAM TLOD NONPAREIL  
 THE LADYBUGS  
 THE MEMORY JOGGERS  
 THE PONDEROSA KREWE  
 THE RIOTS  
 THE SCOTTS  
 THE SPINE HOSPITAL OF LOUISIANA  
 TIMELESS GIVERS  
 V A - VERY APPRECIATIVE OF  
 VETERANS!  
 VALLUZZO COMPANIES  
 VIC'S VICTORS  
 VINCENT A FERACHI  
 WELLCARE  
 WHEALDON ESTATES



\* Team Names are listed as entered into Classy by Team Captains

## **CORPORATE PARTNERS**

*\* All or a portion of this partnership is in-kind*

### **\$20,000+**

The Charles & Nancy Valluzzo Fund

### **\$10,000 - \$19,999**

Entergy

Lamar Advertising Company\*

The Valluzzo Companies

### **\$5,000 - \$9,999**

Baton Rouge Coca-Cola Bottling Co.\*

Blue Cross & Blue Shield of Louisiana

Capitol Trucks, LLC

City Group Hospitality

Franklin Press, Inc

Home Instead Senior Care\*

Investar Bank

KPMG\*

Performance Contractors, Inc.

Reliant Fabrics/Innovative Textiles

Robinson Brothers Ford Lincoln

St. James Place

### **\$4,999 & Below**

Dignity Memorial

Lee Michaels Fine Jewelry

REV\*

## **ROSEMARY SOCIETY**

*Multi-Year Giving Society*

### **\$55,000+**

Mr. Charles Valluzzo

### **\$10,000 - 30,000**

Mr. & Mrs. George Balhoff

Mr. & Mrs. Richard Byrd

Mrs. Beverly Coates

Mr. & Mrs. Martin Kearns

Mr. & Mrs. Richard A. Lipsey

Milford Wampold Support  
Foundation

Huey & Angelina Wilson Foundation

### **\$6500-1500**

Anonymous

Mr. & Mrs. Tom Adamek

Ms. Cindy Amedee

Ms. Annette Barton

Mr. & Mrs. Richard Bourgeois

Mr. & Mrs. Terrell Brown

Mr. & Mrs. Steve Carville

Ms. Catherine Coates

Mr. John D'Angelo

Mr. & Mrs. Benny DiChiara

Mr. & Mrs. Michael Divincenti

Mr. & Mrs. Bill Dixon

Dr. & Mrs. W. Patrick Gahan

Mr. & Mrs. Milton Graugnard

Mr. & Mrs. Butch Hart

Mr. & Mrs. Tom Hawkins

Mr. & Mrs. Ian Hipwell

Mr. & Mrs. Robert Levy

Mrs. J.D. Lyle

Mr. & Mrs. Richard Manship

Ms. Linda Marchand

Mr. & Mrs. Frank McArthur

Mr. & Mrs. Rolfe H. McCollister, Jr.

Ms. Michelle Nichols

Mr. & Mrs. Kevin Ortego

Mr. Richard Piazza

Mr. & Mrs. Joseph F. Quinlan, III

Mr. & Mrs. Chase Rainey

Mr. & Mrs. Kevin Reilly

Mr. & Mrs. Al Rotenberg

Mr. Arthur Scanlan, III

Mr. & Mrs. Len Sedlin

Mr. Edward Shobe

Dr. & Mrs. Steven Soper

Mr. Marshall Perry Vass

Mrs. Mary Woolfolk

### **\$1499 & Below**

Mr. & Mrs. Jim Akers

Dr. & Mrs. Richard Akin

Albemarle Corporation/Foundation

Mr. & Mrs. Michael Albritton

Mr. & Mrs. Barry Allen

Mrs. Barbara Auten

Mr. & Mrs. Princeton Bardwell

Mr. Tom Besselman

Mr. & Mrs. Barry Blumberg

Mr. & Mrs. Jim Bourgeois

Mr. & Mrs. Adam Bourgeois

Mr. & Mrs. Michael Bourgeois

Dr. & Mrs. Frank Breaux

Ms. Julie Breeden

Mr. Pat Broderick

Mr. & Mrs. Jack Burk

Mr. & Mrs. Damian Calato

Mr. & Mrs. Joe Carvalhido

James Carville & Mary Matalin

Mr. & Mrs. Stephen Chapman

Ms. Kim Chauvin

Cil's 7

Mr. & Mrs David Corona

Mr. Justin Craig

Mr. & Mrs. Matthew D'Aubin

Mrs. Vicky Dauterive

Mr. & Mrs. Dean Davis

Mr. & Mrs. Steven Davis, Jr.

Ms. Holly Hildalgo DeKeyzer

Mr. & Mrs. Robert Dille

Mr. Tim Dubnansky

Mr. John Due

Ms. Tammy Duhon

Mr. Chris Dupre

Ms. Carolyn Dyer

Mr. & Mrs. Bill Edwards

Ms. Charlene Favre

Mr. John H. Fetzer, III

Ms. Carol Fitch

Mr. & Mrs. Ken Franz

Mrs. Diane Gaffney

Mr. Steve Gaffney

Mr. Heinz Geiss

Mr. & Mrs. Nolan Gill

Mr. & Mrs. Warren Gottsegen

Mrs. Cynthia Graves

Mr. & Mrs. Lane Grigsby

Mr. & Mrs. Billy Guitreau

Dr. Robert I. Hart & Dr. Susan Nelson

Pat & Sparky Hoffman

Mrs. Tammy Humes

Mr. & Mrs. Skip Irwin

Ms. Jennifer S. Johnson

Mr. & Mrs. Jerry G. Jolly

Mrs. Cheryl Kennedy

Mrs. Pat Ketelsen

Ms. Katherine King

Mrs. Julie Knight

Mr. John Kovich

Mr. & Mrs. Mathew Laborde  
 Mr. & Mrs. Charles Lamar  
 Mr. & Mrs. Charles Landry  
 Mr. & Mrs. Gordon LeBlanc  
 Mr. & Mrs. William Lee, II  
 Mr. Andy Lopez  
 Mr. & Mrs. John Madison  
 Mr. & Mrs. Brian Mascari  
 Mr. & Mrs. Mickey McCall  
 Dr. John McClelland  
 Mr. & Mrs. Layne McDaniel  
 Mr. & Mrs. Wally McMakin  
 Mr. Julio Melara  
 Mrs. John C. Miller  
 Mr. & Mrs. Rolfe Miller  
 Mr. & Mrs. Jonathan Moore  
 Mr. & Mrs. Mike Moran  
 Mr. & Mrs. Mark Morgan  
 Ms. Gail Nelson  
 Mr. & Mrs. George Newbill  
 Mr. & Mrs. David Olivier  
 Mr. & Mrs. Otis William "Bill" O'Quin  
 Mrs. Diane Ourso  
 Mrs. Nell Patrick  
 Mr. & Mrs. Jerry Pearson  
 Mr. Eugene Ponti  
 Ms. Yvette Poret-Crochet  
 Mr. & Mrs. Kyle Rainey  
 Mrs. Kay Radlauer & Mr. Dennis  
 Demcheck  
 Robert Family No. 1, LLC  
 Mr. & Mrs. Chip Robert  
 Mr. & Mrs. Blanchard Sanchez  
 Mr. & Mrs. Justin Sanders  
 Mr. & Mrs. Kent A. Schexnaydre  
 Mr. & Mrs. Coy Smith  
 Mrs. Mary Spera  
 Ms. Michelle Stevens  
 Mr. & Mrs. Todd Stevens  
 Mr. & Mrs. Hardy Swyers  
 Mr. & Mrs. Randy Tullier  
 Miss Caroline Valluzzo  
 Miss Claire Valluzzo  
 Mr. & Mrs. Chris Valluzzo  
 Mr. Harrison Valluzzo  
 Mr. & Mrs. John C. Valluzzo  
 Mr. Locke Valluzzo  
 Miss Mary Kate Valluzzo  
 Mr. Murphy Valluzzo

Mr. & Mrs. Patrick Valluzzo  
 Mr. Pierson Valluzzo  
 Mr. Shawn Valluzzo  
 Miss Virginia Valluzzo  
 Mr. & Mrs. Troy Wagener  
 Mr. Robert Ward  
 Mr. Charles Weidig

### **GIFTS OF SPIRIT**

*Multi-Year Pledges*

#### **\$50 - \$2,000**

Mrs. Laurie Aronson  
 Ms. Ann Baskin  
 Mrs. Ginger D'Antoni  
 Mr. & Mrs. Dane D'Aquin  
 Mr. & Mrs. Butler Fuller  
 Mr. Lance Glaser  
 Mr. & Mrs. Fred Grace  
 Ms. Debbie Hebert  
 Mr. & Mrs. Neal Hendrick  
 Ms. Anita Kennedy  
 Mr. & Mrs. Jeff Latino  
 Ms. Doris Rogers  
 Mr. & Mrs. Josh Rounds  
 Mr. & Mrs. Paul Roux  
 Mr. & Mrs. John Shortess  
 Mr. & Mrs. Paul Soileau  
 Mr. Mike Williams

### **GIFT OF FRIENDSHIP**

#### **\$20,000+**

Mr. Wayne Fluitt

#### **\$5,000+**

Mr. & Mrs. Wayne Barker  
 Mr. & Mrs. Bill Dixon  
 Louisiana Association of United Ways  
 Ms. Kim Robertson  
 Ms. Lori Scardina  
 Mr. Charles Valluzzo

#### **\$1,000 - 4,999**

Atmos Energy Corporation  
 Mr. & Mrs. George Balhoff  
 Benevity/American Endowment  
 Foundation  
 Mr. & Mrs. Joseph Robert Brown  
 Cajun Industries Holdings, LLC  
 Mr. Frederic Churchman  
 Ms. Camille Coates  
 Ms. Margaret "Holly" Coates  
 Ms. Mia Cummings  
 Faulk & Winkler, LLC  
 Mr. Scott Favre  
 Ms. Malinda F. Fontenot  
 Mr. Carey Guglielmo  
 Gulf Coast Office Products  
 Hannis T. Bourgeois, LLP  
 Mr. & Mrs. C. Geron Hargon  
 Mr. & Mrs. Tom Hawkins  
 Mrs. Nancy Hubbard  
 Mr. & Mrs. Keith Istre  
 Mr. & Mrs. Mathew Laborde  
 Mr. & Mrs. Charles Lamar  
 Mr. Randy Ledet  
 Judge Jennifer Luse  
 Mr. & Mrs. Carlo MacDonald  
 Mr. Christopher Martin  
 Dr. John McClelland  
 Mr. & Mrs. Edward Middleton  
 Plaquemine Rotary Club  
 Mr. & Mrs. Paul Roux  
 Shell Oil Company Foundation  
 Dr. & Mrs. Steven Soper  
 Ms. Kathryn Sullivan  
 Mr. Dennis White  
 Mr. & Mrs. William Wilcox  
 Ms. Robin Wright

#### **\$500 - \$999**

Ms. Cynthia Adams  
 Ms. Jayne Apple  
 Mr. William Balhoff  
 Mr. Richard Bassett  
 Mr. Mike Baumann  
 Mr. Patrick Blanchard  
 Mr. Christopher Bonvillian  
 Mr. Phil Brantley  
 Ms. Doris Brown  
 Mr. Chris Caire

Ms. Michelle Carriere  
Mr. Dean Cazenave  
Community Health Charities of Louisiana & Mississippi  
Ms. Ariel Deville  
Mr. & Mrs. Johnny Dobecka  
Mr. Layne Dodd  
Ms. Audrey Duplechian  
Facebook Payments Inc  
First Horizon Bank  
Mrs. Anne Graham  
Mrs. Theresa Hay  
Mr. & Mrs. Cordell H. Haymon  
Dr. M. S. Howie  
Mr. James Jarreau  
Mr. & Mrs. C. Gordon Johnson, Jr.  
Ms. Nancy Knapp  
Mr. Hosea LaFleur  
Mr. Wayne Leader  
Ms. Wendy Lipsey  
Louisiana Nursery  
Mr. & Mrs. Mitch Mayes  
Mr. & Mrs. Robert McAnelly  
Ms. Debra McMillin  
Mr. Bowen McRae  
Mr. Gerald Murphy  
Mr. & Mrs. Fred Parks  
Mr. Thomas M. Randolph  
Ms. Sandy Sadler  
Mr. & Mrs. Edward Sanchez  
Mr. & Mrs. Rick Scardina  
Ms. Kathy Seger  
Ms. Ashley Smith  
Mr. John Stagg  
Sunset Garden Club, Inc.  
Mr. & Mrs. Roy Thompson  
Mr. & Mrs. Mike Todd  
Mr. & Mrs. Cliff Vannoy  
Ms. Jane Ward  
Ms. Susan Witherspoon

**\$100 - \$499**

Ms. Donna Aarons  
Mr. Lyman Abadie  
Mr. & Mrs. Robert Abbott  
Mrs. Janet Abernethy  
Mr. Sam Agnew  
Mr. Walt Agnew

Ms. Tammy Ainsworth  
Albemarle Corporation/Foundation  
Mr. Jared Alford  
Ms. Mary Alford  
Ms. Kathy Allen  
Allison Harris Family Fund  
AmazonSmile Foundation  
Ms. Karen Anderson  
Mr. & Mrs. Wyatt Anderson  
Anonymous  
Mr. Hunter Arnold  
Mrs. Laurie Aronson  
C. Richard Atkins, DDS, LLC  
Mr. Don Aubin  
Mrs. Barbara Auten  
Ms. Lena Babin  
Ms. Linda Babin  
Ms. Barbara Bahlinger  
Mr. John M. Baird  
Mrs. Dianne Barksdale  
Mrs. Jeanie Bastin  
Baton Rouge State Fair Foundation, Inc.  
Ms. Cheryl Beadle  
Ms. Glenda C Benson  
Ms. Shannon Bernard  
Ms. Charla Berteau-Hall  
Ms. Maria Bhacca  
Mr. & Mrs. Greg Bodin  
Ms. Jeanne Elise Bourgeois  
Ms. Charlemaine Boyce  
Mr. Trey Boyce  
Mr. William Bozeman  
Mr. & Mrs. Jeryl Breaux  
Mr. Joseph Breaux  
Ms. Peggy Breaux  
Mr. & Mrs. Jay Brooks  
Mr. Frank Brown  
Ms. Janet Brown  
Mr. Donald Buller  
Ms. Ann Bureaux-Reiss  
Ms. Emma Burke  
Ms. Tammy Burl  
Ms. Amy Burleigh  
Mr. Thomas Bush  
Mr. Roger Cador  
Ms. Cheryl Cambre  
Ms. Kristine Cangelosi

Mrs. Effie Caston  
Catholic Daughters of the Americas #2063  
Mrs. Loraine Cazenave  
Century Financial Services, LLC  
Ms. Georgeann Chaffee  
Mr. Jacob Chapman  
Ms. Kathleen Chapman  
Mr. Ken Chapman  
Mr. Larry Chauvin  
Ms. Shanon Chehardy  
Mr. Roy Chenevert  
Ms. Joyce Chustz  
Ms. Sarah Clayton  
Mrs. Beverly Coates  
Mr. & Mrs. Carl H. Cobb  
Ms. Jenna Cockerham  
Mr. & Mrs. Scott Couper  
Ms. Monica Courville  
Mr. Justin Craig  
Mr. Chris Crifasi  
Mr. Greg Curran  
Mr. & Mrs. Lucien Cutrera  
Ms. Lois Daigre  
Mr. Robert Daigrepont  
Mr. Lawrence J. Davis  
Mr. & Mrs. John Dawes  
Mrs. Colette Dean  
Mr. & Mrs. Stephen deBessonnet  
Ms. Elizabeth J. DeMars  
Ms. Irene De Nicola  
Ms. Jackie Dennis  
Ms. Chryl Desselle  
Ms. Abby Devall  
Ms. Donna D. Dewailly  
Mr. & Mrs. Jeffrey Donnes  
Ms. Rose D. Doolittle  
Ms. Aime Duhe  
Ms. Milissa Duhe  
Ms. Lesha Duncan  
Mr. Chris Dupre  
Dutchtown High School  
Dutchtown High Student Services  
Ms. Nicole Easley  
Ms. Rebecca Faciane  
Ms. Mona Falgoust  
Ms. Charlene Favre  
First United Methodist Church



## OUR DONORS

Mr. & Mrs. Danny Fischer  
Ms. Carol Fitch  
Ms. Kathy Foreman  
Ms. Anne Felice Fourrier  
Francois Bend Assisted Living  
Mr. Paul Frick  
Ms. Lisa Frost  
Ms. Pamela Roussel Fry  
Ms. Carmenza Funes  
Ms. Jeanie Furlow  
Dr. & Mrs. James W. Gardner  
Leslie Gemmill  
Mr. & Mrs. Rob Ginn  
Ms. Tina Ginn  
Ms. Heather Folks Givens  
Mr. Charles Goodwin  
Ms. Helen Graf  
Ms. Roxanne Granlund  
Mrs. Cynthia Graves  
Mr. & Mrs. Stuart & Teal Gray  
Mr. & Mrs. Andy Greco  
Mr. Henry Greene  
Shobe Financial Group  
Guaranty Foundation  
Ms. Amy Guelfo  
Mr. Jude Guerin  
Ms. Corinne Gussman  
Ms. Pamela Hack  
Mr. Larry Haley  
Ms. Susanne Hall  
Ms. Liz Hampton  
Ms. Carol Harlow  
Mr. & Mrs. Pat Harrop  
Ms. Jane Hartdegen  
Mrs. Rachel Podorsky Harvey  
Mr. Randall Harville  
Ms. Robin Hawkes  
Mrs. Anne Hawkins  
Ms. Angela Hebert  
Ms. Irene Hebert  
Ms. June Hebert  
Ms. Margaret Heffron  
Mr. Roy Hernandez  
Mrs. Debbie Heroman  
Mr. & Mrs. Daniel Hillmann  
Ms. Gayle Hirschey  
Mr. & Mrs. Wayne Holmes  
Mr. Matthew Horton  
Ms. Bridget Hupp  
Ms. Annette Hutchison  
Mr. & Mrs. Ron Jackson  
Mr. John Jarratt  
Erlander Jeannpierre  
Mr. & Mrs. Craig Jennings  
John & Shavonne Fogg Family Fund  
Mr. C. Lloyd Johnson  
Ms. Dawn Johnson  
Ms. Jennifer S. Johnson  
Ms. Belinda Johnston  
Mr. & Mrs. Jerry G. Jolly  
Ms. Mary Ayo Jones  
Ms. Tiffany Jones  
Mr. Michael Jordan  
Mr. Matthew K. Juneau  
Ms. Allie Junkersfeld  
Just Give- Great Non Profits  
Mrs. Pat Ketelsen  
Mr. Kevin Knobloch  
Mr. William Krause  
Mr. Jak Kunstler  
Mr. & Mrs. Errol Labat  
Mr. David Laiche  
Ms. Shelly Lambert  
Mr. & Mrs. Raymond Lamonica  
Ms. Ann H. Langlois  
Mr. & Mrs. Rodger Launey & Family  
Ms. Frances Lauzon  
Ms. Heather Laxton  
Mr. Feltus Barrow Leake  
Mr. & Mrs. Bobby LeBlanc  
Ms. Karen LeBlanc  
Mr. Troy LeBlanc  
Mr. Lester Lee  
Mrs. RoseMarie Leleaux  
Ms. Julie Lewis  
Mr. & Mrs. Richard A. Lipsey  
Mr. Michael Lopiano  
Mr. & Mrs. Tim Louwers  
Magnolia Brook Assisted Living  
Mr. Mickey Maher  
Ms. Vera Major  
Mr. Kenneth W. Mall  
Ms. Melanie Marsh  
Ms. Katherine Martin  
Mr. & Mrs. Brian Mascari  
Mr. Harold McCullough, Sr.  
Ms. Abby McCurry  
Ms. Sherry McKinley  
Mr. & Mrs. Morris McQuiddy  
Mrs. Kathleen Melchers  
Mr. Andrew Meschwitz  
Ms. Aimee Miciotto  
Mr. Edward Milner  
Mr. Wes Mincin  
Mr. & Mrs. John Mineo  
Ms. Valerie Monks  
Mr. Jay Montalbano  
Mrs. Charlene Guariso Montelaro  
Mr. Lloyd Moon  
Mr. Byron R. Moore  
Ms. Nealy Morain  
Mr. & Mrs. Don Morgan  
Ms. Mary Morgan  
Ms. Tomi Morton  
Ms. Denise Murray  
Ms. Karon Musemeche  
Mrs. Ann Naquin  
Mr. W. Hibbett Neel  
Dr. Mary Neiheisel  
Ms. Alison Nissen  
Mr. & Mrs. Roger Oberle  
Mr. & Mrs. Huntington Odom  
Mr. Sean Painter  
Ms. Barbara Palermo  
Mr. Guy Palermo  
Toni Palermo  
Ms. Pam Parker  
Ms. Jan Parks  
Mr. & Mrs. Lew Parks  
Ms. Romelia Pasillas  
Ms. Anna Payne  
Mr. & Mrs. William Pecue  
Mr. & Mrs. Joseph & Patricia Peduzzi  
Ms. Christy Perdue  
Mr. Bryson Person  
Mr. Todd Pettavino  
Ms. Renee Pierce  
Mr. Jeff Pierson  
Mr. Scott Plauche  
Pledgeling Foundation  
Mr. Jay Podorsky  
Mr. Michael Podorsky  
Ms. Sharon Pol  
Mrs. Edna M. Prince

Ms. Yvonne Pritchard  
 Mrs. Sue Rainer  
 Mr. Mark Ransome  
 Ms. Marla Reeves  
 Ms. Stephanie Rempe Remien  
 Mr. Gregory Richard  
 Mr. & Mrs. John Richard  
 Ms. Keisha Robillard  
 Mrs. Meryl Rodriguez  
 Ms. Melody Roig  
 Ms. Angela M. "SuSu" Rosenthal  
 Mr. Hugh Ross  
 Mr. & Mrs. Ron Ross  
 Mrs. Shaye Sable  
 Mr. James Saizan  
 Ms. Debbie Salvant  
 Mr. Thomas H. Sanders, III  
 Ms. Barbara Sawyer  
 Mr. Smokey Scanlan  
 Mr. Donald R. Scardina  
 Mr. Todd Schexnayder  
 Mr. & Mrs. Kent A. Schexnaydre  
 Mr. & Mrs. Max Schiele  
 Ms. Janet S. Schoonmaker  
 Schwing Management, LLC  
 Mr. Charles E. Schwing  
 Mr. & Mrs. Len Sedlin  
 Ms. Janis Lowe  
 Ms. Laura Shaw  
 Mr. & Mrs. Neal Sheets  
 Shell Oil Employee Giving Program  
 Ms. Suzie Shilling  
 Mr. Edward Shobe  
 Mr. William Silvia  
 Ms. Claudine Singleton  
 Ms. Denise Singleton  
 Mr. Fred Smith  
 Ms. L'Andra Smith  
 Ms. Lois Smyth  
 Mr. Joseph St. Julien  
 Mr. Louis E. St. Julien, Jr.  
 State of Louisiana Department of  
 Environmental Quality  
 Mr. Kevin Stevens  
 Mr. Scott Stewart  
 Ms. Emily Stich  
 Mr. & Mrs. Jimmy Stockwell  
 Ms. Shelley Suco  
 Mr. Bret Talbot

Ms. Christi Talley  
 Ms. Alice Tallis  
 Mr. & Mrs. Mike Tauzin  
 Ms. Jana Taylor  
 Mr. Claude Tellis  
 Ms. Stephanie Marcus Templet  
 Ms. Melissa Terito  
 Ms. Patricia Territo  
 Mr. Sammy Terito  
 Mr. John Scott Tetlow  
 Mr. Jeremy Theriot  
 Mr. Keith Theriot  
 Mr. James Thompson  
 Ms. Vickie Thorton  
 Ms. Stephanie Tidwell  
 Ms. Christy Turner  
 Mr. Lewis Unglesby  
 Ms. Linda R. Upton  
 Ms. Katrina Vanek  
 Ms. Gretchen Varnell  
 Mr. & Mrs. Chris Viator  
 Mrs. Alene Vicknair  
 Ms. Trudi Waddell  
 Ms. Sandra Wade  
 Ms. Beverly Wagener  
 Mr. Dick Wager  
 Mr. & Mrs. Alex Wall, Jr.  
 Ms. Stacy Wascom  
 Ms. Laura Wasson  
 Ms. Ashley Wellons  
 Ms. Nicole Wester  
 Ms. Judy Wetherbee  
 Ms. Rose Mary Wilhelm  
 Ms. Jessica Wilkinson  
 Ms. Suzanne Willis  
 Ms. Jeanne Wintz  
 Ms. Barbara Wittkopf  
 Mrs. Mary Woolfolk  
 Ms. Sandra Wright  
 Mr. Matt Young  
 Ms. Sheryl G. Young  
 Mr. Tim Young  
 Ms. Stacey Zito

## **CORPORATE SPONSORS**

*\* All or a portion of this sponsorship is in-kind*

### **\$10,000-15,000**

ENERGY  
 PLANTATION MANAGEMENT  
 COMPANY  
 VALLUZZO COMPANIES/  
 MCDONALD'S

### **\$1,000 - \$5000**

ALBEMARLE CORPORATION/  
 FOUNDATION  
 ALWAYS BEST CARE  
 ANONYMOUS  
 BASF CORPORATION  
 BATON ROUGE COCA-COLA  
 BOTTLING CO.  
 BLUE CROSS & BLUE SHIELD OF  
 LOUISIANA  
 BREAZEALE, SACHSE & WILSON, L.L.P.  
 CENTENE CORPORTION  
 CHURCH FUNERAL SERVICES &  
 CREMATORY  
 DIGNITY MEMORIAL  
 DIVERSIFIED HEALTHCARE, L.L.C.  
 ESSENTIAL FEDERAL CREDIT UNION  
 FAULK & WINKLER, LLC  
 FRANKLIN PRESS, INC  
 HEALTHY BLUE  
 HOME BANK  
 KEAN MILLER LLP  
 MR. CHARLES LAMAR  
 LIFE SOURCE HOSPICE  
 LIPSEY'S, LLC  
 LOUISIANA LOTTERY CORPORATION  
 MAIN STREET PILOT CLUB OF PILOT  
 CLUB INTERNATIONAL  
 METHANEX USA, LLC  
 MILTON J. WOMACK FOUNDATION  
 MMR GROUP, INC  
 OLLI AT LSU  
 POSTLETHWAITE & NETTERVILLE  
 RAYMOND JAMES  
 RESTHAVEN GARDENS OF MEMORY &  
 FUNERAL HOME  
 SOUTHSIDE GARDENS RETIREMENT  
 CENTER & ASSISTED LIVING

THE BATON ROUGE CLINIC  
THE PEARL AT JAMESTOWN  
THE SPINE HOSPITAL OF LOUISIANA  
TRANSFORMYX

### **\$500 - \$999**

HOLLY COURT ASSISTED LIVING  
HOSPICE SPECIALIST OF LOUISIANA  
LEGACY ESTATE & ELDER LAW OF  
LOUISIANA, LLC  
LOUISIANA LOTTERY CORPORATION  
MAGNOLIA BROOK ASSISTED LIVING  
OCEANS BEHAVIORAL HEALTHCARE  
PALLIATIVE CARE OF BATON ROUGE  
SERENITY PRIVATE CARE, LLC  
SUNRISE SENIOR LIVING

### **FOUNDATIONS/GRANTS**

ALZHEIMER'S FOUNDATION OF  
AMERICA  
BATON ROUGE AREA FOUNDATION  
BATON ROUGE STATE FAIR  
FOUNDATION, INC.  
BR & R FOUNDATION  
CAPITAL AREA AGENCY ON AGING  
CREDIT BUREAU OF BATON ROUGE  
FOUNDATION  
E.J. & MARJORY B. OURSO FAMILY  
FOUNDATION  
PHRMA  
REV  
MR. RANDALL ROBERTS  
STUPP BROTHERS & IRON COMPANY  
FOUNDATION  
WILLIAM EDWIN MONTAN TRUST  
YOUNG WOMEN'S CHRISTIAN  
ORGANIZATION

### **TRIBUTE GIFTS**

*\* Given in honor or in memory of  
the following:*

#### **IN HONOR OF:**

##### **MRS. BARBARA AUTEN**

Mr. & Mrs. Errol Labat

##### **DEACON FRANK BAINS**

Catholic Daughters of the Americas  
#2063

##### **KIM CHAUVIN**

Randall Cox

##### **KAREN DARNALL**

Mrs. Karen Deville

##### **RAMON JARRELL**

Mr. & Mrs. William Pecue

##### **MRS. DONNA KLEIN**

Ms. Roxanne Palermo

##### **DR. JOHN MCCLELLAND**

Ms. Angela M. "SuSu" Rosenthal

##### **MR. DARREN PALERMO**

Ms. Sally Seneca

##### **MS. MARY NELL SANCHEZ**

Mr. & Mrs. Edward Sanchez

##### **THETA CHI FRATERNITY**

Mr. Mickey Maher

##### **MR. & MRS. TIM VALLUZZO**

Mr. Charles Valluzzo

##### **FATHER JERRY YOUNG**

Ms. Anne Felice Fourrier

#### **IN MEMORY OF:**

##### **MRS. DANA AGNEW**

Mr. Walt Agnew  
Mr. Hunter Arnold  
C. Richard Atkins, DDS, LLC  
Mrs. Dianne Barksdale

Ms. Maria Bhacca  
Mr. & Mrs. Randy Bonnacaze  
Judge Tim J. Dwyer  
Mr. & Mrs. Pat Harrop  
Mr. Matthew Horton  
Mr. & Mrs. Craig Jennings  
Mr. & Mrs. Jerry G. Jolly  
Mr. & Mrs. Dan Jumonville  
Mr. William Krause  
Mr. Jak Kunstler  
Mr. W. Hibbett Neel  
Ms. Christy Perdue  
Mrs. Sue Rainer  
Ms. Marla Reeves  
Mr. & Mrs. Roy Thompson  
Mr. & Mrs. Mike Todd  
Ms. Katrina Vanek  
Ms. Suzanne Willis  
Mrs. Mary Woolfolk

##### **MR. BILL AUTEN**

Mr. Randall Harville

##### **MR. RUSSELL JOHN AUTIN, SR.**

Montpelier Pine Garden Club  
Mr. & Mrs. Ron Ross  
Mr. & Mrs. Chris Viator

##### **MS. KAREN MARIE BAHLINGER**

Ms. Barbara Bahlinger

##### **PATRICIA TAYLOR BAILEY**

Ms. Karlie Becnel  
Mr. Frank Brown  
Ms. Tina Ginn  
Ms. Courtney Campbell Merwin  
Ms. Romelia Pasillas  
Mr. & Mrs. Joseph Peduzzi  
Ms. Joy Stoneham  
Ms. Erin Wheeler

##### **EVELYN "BUBBIE" BANKER**

Mrs. Brenda Banker

##### **DON E. BARKSDALE**

Mrs. Dianne Barksdale

**MRS. CLIFTON BINGHAM**

Mr. & Mrs. Morris McQuiddy  
Schwing Management, LLC

**MRS. BARBARA ANN FACUNDUS  
BOGAN**

Dr. & Mrs. James W. Gardner  
Mr. Robert W. Leteff  
Mr. & Mrs. Don Morgan  
Mr. & Mrs. James L Summers

**MRS. VERA BRAUD**

Ms. Tammy Ainsworth  
Mr. James Jarreau

**MS. BETTY BREAUX**

Ms. Betina Breaux

**MRS. LINDA BRODERICK**

Ms. Marilyn Muse

**MS. BARBARA ALBERT BROWN**

C. Richard Atkins, DDS, LLC

**MR. JAMES CAMPBELL**

Mr. & Mrs. Rob Ginn

**MR. BOB CANGELOSI**

Mr. Charles Valluzzo

**MR. CHARLES CARAWAY**

Benevity/American Endowment  
Foundation

**URSULA CARMENA**

Ms. Gayle Hirschey  
Mr. & Mrs. Len Sedlin  
Ms. Linda R. Upton

**MRS. AUDRY CHANEY LEBLANC  
CASHIO**

Mr. & Mrs. Bobby LeBlanc

**MRS. ALICE LECOCQ CHRISTINA**

Ms. Patricia G. Horvilleur

**MS. CARMEN CHUSTZ**

Mr. Charles Valluzzo

**MS. DEBORAH CHUTZ**

Ms. Denise Singleton

**MS. BETTY COHEN**

Mr. & Mrs. Rickey Esnard  
Ms. Charlotte Ewing  
Ms. Sandra Hardy  
Ms. Brenda S. Lofton  
Mr. Doug Wilkinson  
Ms. Sandra Wright

**MS. HELEN COOPER**

Mr. Charles Valluzzo

**MR. JOHN COOPER**

Mr. Charles Valluzzo

**MS. BETTY COSTELLO**

Mr. Michael Lopiano

**MS. SHELVIA "SHEB" CHAIN  
CROOK**

Dutchtown High School  
Mr. Byron R. Moore  
Mr. Matthew Shelly

**MR. M. GENE CUNNINGHAM**

Mr. & Mrs. Randolph Ogden

**MR. GEORGE DANIEL**

Ms. Jackie Dennis  
Mr. & Mrs. Craig Jennings  
Mr. & Mrs. Jerry G. Jolly  
Mrs. Ann Naquin  
Mr. & Mrs. Fred Parks  
Mrs. Sue Rainer  
Mr. Edward Shobe

**MR. WILLIAM RANDALL DAVIS**

Mr. & Mrs. Richard A. Lipsey

**MRS. JULIETTE DECOTEAU**

Ms. Robin Hawkes

**MR. GORDY DEROUEN**

Mrs. Adrienne Taylor

**POLLY DESBORDES**

Mr. Mike Williams

**MR. JAMES DESHOTELS**

Ms. Elena Deshotels

**FELTON & MAYBEL DICKINSON**

Mr. Wayne Leader

**ROGER DIETRICH**

Century Financial Services LLC  
Mr. & Mrs. Harold Coker  
Ms. Karen Ferrara  
Ms. Marion H. Forbes  
Mr. Larry Haley  
Mr. & Mrs. Alex Wall, Jr.  
Mrs. Donna Werner

**MS. LACY DOSS**

Ms. Trudy Williams

**JACKIE DUKE**

Mr. Frederic Churchman  
Mr. & Mrs. Gerald Harvison  
Ms. Becky Labatut  
Ms. Gretchen Ladner

**THURMAN DUMAS**

Ms. Cheryl Beadle  
Mr. & Mrs. Stephen deBessonnet  
Ms. Lillia Noel

**MR. DENNY ERWIN**

Ms. Karen LeBlanc

**MR. BRUCE FACIANE**

Mr. & Mrs. Scott Couper  
Ms. Rebecca Faciane  
Ms. Margot Kiehfluss  
Ms. Pam Parker

Mr. Bret Talbot  
Mr. & Mrs. DJ Webre  
Mr. Frank N. Young

**MR. VINCENT A. FERACHI**

Mrs. Janet Abernethy

**ANDREA FLEMING**

Allison Harris Family Fund

**MS. MARLENE LEBARRE FOLSE**

Ms. Jennifer S. Johnson

**MARJORIE DAVIS FORBES**

Ms. Donna Aarons

**MR. RICHARD FRANK**

Ms. Vera Major

**JENNIFER GIBBS**

Mr. & Mrs. DJ Webre

**ALLEEN GRIFFIN**

Vickie Thorton

**MRS. SUE GRIFFITH**

Dr. John McClelland  
Mr. Charles Valluzzo

**KAROL GUIDRY**

Ms. Mary Doise  
Ms. Rebecca Frederick  
Mynan Guidry  
Ms. Sharon Holder  
Mr. & Mrs. Keith Istre

**CONSTANCE EDWINA HARDIN**

Ms. Donna D. Dewailly

**EUGENIA HARTMAN**

Mr. & Mrs. John Dawes

**MS. DOROTHY HAYES**

Mr. & Mrs. Charles Lamar

**MRS. IKEY HEWES**

Mr. Don Aubin  
Ms. Susan Barbin  
Ms. Colette Boies

Ms. Gay Elizabeth T. Crain  
Mr. & Mrs. Lucien Cutrera  
Mr. & Mrs. Jon Gary  
Ms. Susan Hoge  
Mr. Feltus Barrow Leake  
Ms. Melanie Marsh  
Ms. Carolyn Peyton

**MRS. BARBARA HOLLIER**

Dr. Mary Neiheisel

**MR. & MRS. CHARLES HUTCHINS**

Mr. Travis Hutchins

**RAMON JARRELL**

Mr. & Mrs. Randy Bonnezeze

**MR. LOUIS JOSEPH**

Ms. Vera Major

**ROSE ANNE JUNEAU**

Ms. Lelia "Lee" Davis  
Mr. Byron Gauthier  
Ms. Gayle Hirschey  
Mr. Matthew K. Juneau  
Ms. Barbara Mixon  
Ms. Cindy Moreau  
Ms. Debra Towe  
Mr. & Mrs. Gary L Warrington

**MR. RON KENNEDY**

Mr. Hosea LaFleur

**CHARLES "CHARLEY" KNUTZ**

Reverend Dan Krutz

**MRS. GLORIA R. LABAT**

Mrs. Barbara Auten  
Mr. & Mrs. Errol Labat

**MR. LUTHER LADNER**

Mr. & Mrs. Jimmy Stockwell

**MR. LEONARD LAMONICA**

Mr. & Mrs. Raymond Lamonica

**MS. KIMBERLY LANDACRE**

Ms. Stacey Zito

**ANNIE LAURIE O'BANION**

**"KOOTA" LANDRY**

Ms. Diana Horne

**MR. BUTCH LANDRY**

Dutchtown High Student Services

**MS. ELLA LANDRY**

Ms. Julia Bourgeois  
Mr. & Mrs. Carl H. Cobb  
Mr. & Mrs. Jeffrey Donnes  
Ms. Mona Falgoust  
Mr. & Mrs. Dan Ferguson  
Mr. & Mrs. Errol Labat  
Mr. & Mrs. Dale Landry  
Ms. Paige Rodrigue  
Ms. Carol S. Sloane

**MRS. AMY LEADER**

Mr. Wayne Leader

**MR. FLORIN LEADER**

Mr. Wayne Leader

**MR. SAMUEL B. LOVE**

John & Shavonne Fogg Family Fund

**MRS. CATHARINE ANN CASSIDY  
LUSE**

Judge Jennifer Luse

**MR. DON LYLE**

Mr. Charles Valluzzo

**MS. CATHERINE MARAIST**

Mr. & Mrs. Raymond Lamonica

**MR. FRANK MARAIST**

Ms. Susan Dixon  
Mr. & Mrs. C. Gordon Johnson, Jr.  
Lagniappe Dulcimer  
Mr. & Mrs. Brian Mascari

**ENID MATHERNE**

Ms. Vickie B. Bayham  
Ms. Constance Howell

**MRS. CATHIE LOUISE WINTZ MAY**

Ms. Jeanne Wintz

**MS. MARY GRACE MCCARTY**

Ms. Angela M. "SuSu" Rosenthal

**MRS. CARLA CROSBY  
MCCLELLAND**

Mr. John M. Baird  
Mr. & Mrs. Hardy Swyers

**JULIE MCGUIRE**

Mr. Charles Valluzzo

**MR. JAMES "JIM" MELCHERS**

Mrs. Dianne Barksdale

**MR. JIM MILLER**

Mr. James Thompson

**MRS. JOHN C MILLER**

Leslie Gemmill  
Ms. Susanne Hall  
Ms. Bridget Hupp  
Mr. Kevin Knobloch  
Ms. Frances Lauzon  
Ms. Amy McCalip  
Sandy Sadler  
Ms. Jana Taylor  
Ms. Leasa Tomlin

**ROSIE MONICA**

Ms. Dawn Johnson

**MRS. NANCY MOON**

Mr. Lloyd Moon

**MS. FLO "MEMO" MORRIS**

Ms. Vicky Canezaro  
Ms. Pamela Hack  
Ms. Robin Melancon

**MR. FRANCIS PAUL NAQUIN, JR.**

Mr. & Mrs. Raymond Lamonica

**GAIL NELSON**

Ms. Karen Anderson

**SYDNEY B. NELSON**

Ms. Karen Anderson  
Mr. & Mrs. Wyatt Anderson  
Mrs. Beverly Coates  
Steve & Becky Evans  
First United Methodist Church  
Ms. Margaret Heffron  
Mr. John Jarratt  
Mr. & Mrs. Raymond Lamonica  
Mr. & Mrs. Iveson B. Noland, III  
Mr. John O. Westbrook

**PHYLLIS NEWSOM**

Mr. & Mrs. Will Moore

**MR. & MRS. BILL NOONAN**

Ms. Sandra Fox

**FRANCES ODOM**

Mrs. Edna M. Prince

**MR. WILLIAM JACKSON OLIVER**

Ms. Helen Hoffpauir  
Mr. Thomas W. Lloyd  
Ms. Janet S. Schoonmaker

**MRS. JUANITA BASS OSBORNE**

Mr. Sammie Kirk  
Ms. Vera Major

**MR. CARLOS M. PADIAL, SR.**

Ms. Lorie Ann Labbe'

**MR. JAMES PELTIER**

Mr. Billy Raybon  
Ms. Coral Rodriguez

**MR. ALVIN M. PHILLIPS**

Ms. Carol Calhoun

**MRS. PAMELA HELMS PIAZZA**

Mr. Richard Piazza

**MR. DONALD PICOU**

Mrs. Margaret Picou

**MARY CASCIO PLAUCHE'**

Baton Rouge State Fair  
Foundation, Inc.

**MS. YVONNE PRITCHARD**

Ms. Robin Melancon

**MR. RANDY REA**

Ms. Pamela Roussel Fry  
Ms. Linda R. Upton

**MRS. EARLEAN REDDIX**

Ms. Mary Reddix

**MR. DONALD "DON" JAMES  
RODRIGUEZ**

Mrs. Meryl Rodriguez

**PEARL ROSS**

Ms. Nealy Morain

**MS. JOSIE RUFFINO**

Mr. Charles Valluzzo

**MR. DOUG SALMON**

Mr. & Mrs. Steve Ward

**GERALDINE M. SCARDINA**

Mr. & Mrs. Joseph Quinlan

**MIKE SCHOUEST**

Mrs. Dianne Barksdale  
Mr. & Mrs. Rob Ginn

**MR. JAMES "SNO" SHEETS**

Mrs. Alida B. Casey

**MR. JAMES SHIRLEY**

Mr. Roland Glover

**MR. GARY SLIGAR**

Mrs. Barbara Auten  
Mr. Charles Valluzzo

**MARCELLA STADOLNIK**

Ms. Karin Simmons

## OUR DONORS

**MR. BOB SWANSON**

Ms. Kathy Allen

**MR. GEORGE TANOOS**

Mrs. Verna J. Tanoos

**MS. BRENDA THERIOT**

Ms. Laura Prescott

**MR. E. GRAHAM THOMPSON**

Dr. John McClelland

**MRS. DEBORAH THORNTON-  
THOMPSON**

Ms. Martha Thornton

**REVEREND ETHEL SUSAN JUNIUS  
TILLMAN**

Mr. Henry Tillman

**MRS. IDA BALSANO TRYNIECKI**

Ms. Janice Ledet

**MRS. STACEY TUCKER**

Mrs. Mary Dunbar  
Ms. Corinne Gussman  
Ms. Paula Mohler  
Mrs. Edna M. Prince  
Mr. & Mrs. Max Schiele

**MRS. NANCY VALLUZZO**

Mrs. Barbara Auten

**MRS. VIRGINIA L. VENTRESS**

Ms. Rose D. Doolittle

**MRS. DOROTHY WATSON**

Mrs. Robbie Prejean

**MRS. ANNE HARKEY WEIDIG**

Ms. Grace Oulton

**MR. CHARLES WEIDIG**

Mr. & Mrs. Tim Louwers  
Mr. Michael Marshall

**MR. & MRS. J. CHARLES WHITE**

Benevity/American Endowment  
Foundation

**MR. JOHN WILLIAMS**

Mr. & Mrs. Paul Bilello

**MARIAH WILLIAMS**

Ms. Sonya Griffin

**MR. JIM WILSON**

Ms. Mary Alford Alford  
Ms. Kathleen Chapman  
Mr. & Mrs. Johnny Dobecka

Ms. Cherie Giblin  
Ms. Ann Gonzales  
Ms. Tomi Morton  
Mr. & Mrs. J. Michael Orlesh, Jr.  
Mr. Kevin Stevens  
Mr. Lewis Unglesby

**LEE WILSON**

Ms. Monica Courville  
Ms. Patti Ann Gregoire  
Mr. Sean Painter

**MRS. IRENE WINGERTER**

Mr. & Mrs. Errol Labat

**MRS. ELAINE WITHERSPOON**

Ms. Susan Witherspoon

**MR. HUEY P. L. YAUN**

Mr. John Scott Tetlow

**MR. CLARENCE "PETE" YOUNG**

GHS Class of 1959

*\*\* Listing is based on payments made from January 1, 2022- December 31, 2022. We have made every effort to ensure all contributors or tributes were included. Please contact us if we have omitted or misspelled a name.*

# Memories

IN THE MAKING

## Annual Fundraising Event

The 2022 Memories in the Making Luncheon, held on May 5th, was very successful! Thank you to the 35 table hosts who participated and invited guests to the luncheon. Alzheimer's Services welcomed 21 new donors to the Rosemary Society (\$5000 over 5 years @ \$1000 per year) and had 14 current Rosemary Society members renew their pledges, making them eligible for the 2022 Pooled Challenge Gift. The Pooled Challenge Gift matches Rosemary Society pledges dollar per dollar (doubling the impact of their gift) and was a combination of generous donations made by The Huey & Angelina Wilson Foundation, The Boo Grigsby Foundation, Mr. & Mrs. Martin Kearns, Mr. & Mrs. Richard Byrd, Mrs. Beverly Coates, Mr. & Mrs. Steve Carville, and Mr. Charles Valluzzo.





## 2022 MEMORIES IN THE MAKING TABLE HOSTS

AKERS, JAMES  
BALHOFF, GEORGE  
BOURGOIS, RICHARD  
BRIAN, KEVIN  
CHAPMAN, STEPHEN  
D'AUBIN, MATHEW  
DEKEYZER, HOLLY  
FITCH, CAROL  
GARAFOLA, MANDI  
HAWKINS, TOM  
KOVICH, JOHN  
LABORDE, MATHEW  
LATINO, JEFF  
LEVY, ROBERT

LIPSEY, RICHARD  
MARCHAND, LINDA  
MASCARI, BRIAN  
MCCLELLAND, JOHN  
MCDANIEL, LAYNE  
MOORE, CATHERINE  
MOORE, JONATHAN  
MORGAN, MARK  
OLIVIER, ROBBIE  
RAINEY, CHASE  
SCANLAN, ARTHUR  
STEVENS, MICHELLE  
THOMPSON, ANNE  
VALLUZZO, CHARLES





Mr. & Mrs. Tom Adamek  
Mr. & Mrs. Jim Akers  
Dr. & Mrs. Richard Akin  
Mr. & Mrs. Michael Albritton  
Mr. & Mrs. Barry Allen  
Ms. Cindy Amedee  
Anonymous  
Mr. & Mrs. Rodney Ashworth  
Mrs. Barbara Auten  
Mr. & Mrs. Thomas Axel  
Mr. & Mrs. James M. Baker  
Mr. & Mrs. George Balhoff  
Mr. & Mrs. Princeton Bardwell  
Mr. & Mrs. Glen Bartels  
Ms. Annette Barton  
Ms. Elizabeth Bergin  
Mr. Tom Besselman  
Mr. & Mrs. Barry Blumberg  
Mr. & Mrs. Michael Bourgeois  
Mr. & Mrs. Richard Bourgeois  
Mr. & Mrs. Adam Bourgeois  
The Honorable Rich Bourgeois, Jr.  
Nippy Carville's Bourgeois Great  
Grandchildren  
Mr. & Mrs. Jim Bourgeois  
Dr. & Mrs. Frank Breaux  
The Robert W. Baker Family  
Mr. Pat Broderick  
Mr. & Mrs. Terrell Brown  
Mr. & Mrs. Michael Buchart

Mrs. Mellody Valluzzo Burford  
Mr. & Mrs. Jack Burk  
Mr. & Mrs. Richard Byrd  
Mr. & Mrs. Damian Calato  
Mr. & Mrs. J.H. Campbell  
Mr. & Mrs. Joe Carvalhido  
Mr. & Mrs. Steve Carville  
James Carville and Mary Matalin  
Mr. & Mrs. Steve Carville  
Mr. & Mrs. Stephen Chapman  
Ms. Kim Chauvin  
Mr. & Mrs. Chris Ciesielski  
Cil's 7  
Mrs. Beverly Coates  
Ms. Catherine Coates & Mr. Brian Hale  
Mr. & Mrs David Corona  
Mr. Robert Crosby  
Mr. Justin Craig  
Mr. John D'Angelo  
Mr. & Mrs. Matthew D'Aubin  
Dr. & Mrs. Ralph Dauterive  
Mr. Richard Daviet  
Mr. & Mrs. Dean Davis  
Mr. & Mrs. Steven Davis, Jr.  
Ms. Holly Hildalgo DeKeyzer  
Mr. & Mrs. Benny DiChiara  
Mr. & Mrs. Robert Dille  
Mr. & Mrs. Michael Divincenti  
Mr. & Mrs. Bill Dixon  
Mr. Tim Dubnansky

Mr. John Due  
Magnolia Assisted Living, LLC  
Mr. Chris Dupre  
Ms. Carolyn Dyer  
Mr. & Mrs. Bill Edwards  
Mr. & Mrs. Bert Faulk  
Ms. Charlene Favre  
Mr. John H. Fetzer, III  
Ms. Carol Fitch  
Mr. & Mrs. Ken Franz  
Mr. & Mrs. Charles Freeburgh  
Mr. & Mrs. Paul Frey  
Mr. Steve Gaffney  
Mrs. Diane Gaffney  
Dr. & Mrs. W. Patrick Gahan  
Ms. Arlene Gaudin  
Mr. Heinz Geiss  
Mr. & Mrs. Nolan Gill  
Gonzales Area Foundation  
Mr. & Mrs. Warren Gottsegen  
Mr. & Mrs. Milton Graugnard  
Mrs. Cynthia Graves  
Ms. Lowry Griffon  
Mr. & Mrs. Lane Grigsby  
Mr. & Mrs. Luke Guarisco  
Mr. & Mrs. Billy Guitreau  
Mrs. Charline Hanchey  
Mr. & Mrs. Butch Hart  
Dr. Robert I. Hart & Dr. Susan Nelson  
Mr. & Mrs. Tom Hawkins

Mr. & Mrs. Rory Henderson  
Mr. William Hidalgo  
Mr. & Mrs. Ian Hipwell  
Pat & Sparky Hoffman  
Mrs. Tammy Humes  
Mr. & Mrs. Skip Irwin  
Ms. Jennifer S. Johnson  
Mr. & Mrs. Jerry G. Jolly  
Mr. & Mrs. Martin Kearns  
Mrs. Cheryl Kennedy  
Mrs. Pat Ketelsen  
Ms. Katherine King  
Mr. John Kovich  
Mr. & Mrs. Mathew Laborde  
Mr. & Mrs. Charles Lamar  
Mr. & Mrs. Randy Lambert  
Mr. & Mrs. Jake Lambert  
Mr. & Mrs. Van Lambert  
Mr. & Mrs. Matt LaNasa  
Mr. & Mrs. Charles Landry  
Mr. & Mrs. Gordon LeBlanc  
Mr. & Mrs. Ricky Lee  
Mr. & Mrs. William Lee, II  
Mr. & Mrs. Aaron LeJeune  
Mr. & Mrs. Robert Levy  
Mr. & Mrs. Richard A. Lipsey  
Mr. Andy Lopez  
Mrs. J.D. Lyle  
Mr. & Mrs. John Madison  
Mr. & Mrs. Richard Manship  
Ms. Linda Marchand  
Mr. & Mrs. Brian Mascari  
Mr. & Mrs. Roger Mayes  
Mr. & Mrs. Frank McArthur  
Mr. & Mrs. Mickey McCall  
Dr. John McClelland  
Mr. & Mrs. Rolfe H. McCollister, Jr.  
Mr. & Mrs. Layne McDaniel  
Mr. & Mrs. Wally McMakin  
Mr. Ed McNorton  
Mr. & Mrs. Dan Meinig  
Mr. Julio Melara  
Mrs. John C. Miller  
Mr. & Mrs. Rolfe Miller  
Mr. & Mrs. Jonathan Moore  
Mr. & Mrs. Mike Moran  
Mr. & Mrs. Mark Morgan  
Ms. Gail Nelson

Mr. & Mrs. George Newbill  
Ms. Michelle Nichols  
Mr. & Mrs. David Olivier  
Mr. & Mrs. Otis William "Bill"  
O'Quin  
Mr. & Mrs. Kevin Ortego  
Mr. & Mrs. Milton Ourso, Sr.  
Mrs. Nell Patrick  
Ms. Cheryl Ann Payne  
Mr. & Mrs. Jerry Pearson  
Mr. Richard Piazza  
Mr. Eugene Ponti  
Ms. Yvette Poret-Crochet  
Mr. & Mrs. Tim Pujol  
Dr. & Mrs. Tom Quaid  
Mr. & Mrs. Joseph F. Quinlan, III  
Mrs. Kay Radlauer and Mr. Dennis  
Demcheck  
Mr. & Mrs. Chase Rainey  
Mr. & Mrs. Kyle Rainey  
Mr. & Mrs. Kevin Reilly  
The Rob Wright Family  
Mr. & Mrs. Chip Robert  
The Robert Family No.1, LLC  
Mr. & Mrs. Al Rotenberg  
Mrs. Anne A. Russo  
Mr. & Mrs. Blanchard Sanchez  
Mr. & Mrs. Justin Sanders  
Mr. & Mrs. Joe Sanford  
Mrs. Donna Saurage  
Mr. Arthur Scanlan, III  
Mr. & Mrs. Kent A. Schexnaydre  
Mr. & Mrs. Len Sedlin  
Mr. & Mrs. Neal Sheets  
Mr. John Shirley  
Mr. Edward Shobe  
Mr. & Mrs. William S. Slaughter, III  
Ms. Beryl Smith  
Mr. Craig Smith  
Mr. & Mrs. Coy Smith  
Mr. & Mrs. John Snow  
Dr. & Mrs. Steven Soper  
Mr. & Mrs. Paul Spaht  
Mrs. Mary Spera  
Mr. & Mrs. Wayne Stabler  
Mr. & Mrs. Todd Stevens  
Ms. Michelle Stevens  
Mr. & Mrs. Hardy Swyers

Dr. & Mrs. Scott Thurston  
Mr. & Mrs. Roland Toups  
Mr. & Mrs. Randy Tullier  
Mr. Charles Valluzzo  
Mr. & Mrs. Chris Valluzzo  
Mr. & Mrs. Tim Valluzzo  
Mr. & Mrs. Patrick Valluzzo  
Mr. & Mrs. John C. Valluzzo  
Mr. & Mrs. Bob Valluzzo  
Mr. Murphy Valluzzo  
Mrs. Mary Kate Valluzzo  
Miss Caroline Valluzzo  
Miss Virginia Valluzzo  
Mr. Harrison Valluzzo  
Mr. Shawn Valluzzo  
Mr. Locke Valluzzo  
Mr. Pierson Valluzzo  
Miss Claire Valluzzo  
Mr. Charles Valluzzo, II  
Mr. Rocco C. Valluzzo  
Mr. Marshall Perry Vass  
Mr. & Mrs. Troy Wagener  
Milton Wampold Support  
Foundation  
Mr. Robert Ward  
Mr. Charles Weidig  
Mr. & Mrs. Jason Windham  
Milton J. Womach Foundation  
Mrs. Mary Woolfolk

# CURRENT 2023 CORPORATE PARTNERS



The Charlie & Nancy Valluzzo Fund



 Like us on Facebook  
[www.facebook.com/AlzheimersServices](http://www.facebook.com/AlzheimersServices)

 Follow us on Twitter  
 @AlzServices

 Follow us on Instagram  
 @alzservices

3772 North Boulevard  
 Baton Rouge, Louisiana 70806

(225) 334-7494  
[www.alzbr.org](http://www.alzbr.org)



Alzheimer's Services of the Capital Area is proudly accredited by the **Standards for Excellence Institute®** as having met all the requirements of the *Standards for Excellence®: An Ethics & Accountability Code for the Nonprofit Sector*.



Alzheimer's Services of the Capital Area is a GuideStar Exchange **Gold** Participant, demonstrating a commitment to transparency & accountability.